

CTfastrak Expansion

Stakeholder Meeting #4

Manchester Town Hall

June 3, 2016



Today's Agenda

Phase I Update

- 2016 Service Plan
- Implementation Schedule & Cost Update

Phase II Services

- Timeline
- Market Analysis Review
- *CTfastrak* Service Options
- Supporting Services

Phase II *CTfastrak* Facilities and Infrastructure



Phase I Update

2016 Service Plan

- Enhanced local *CTtransit* bus service
- Due to limited funding availability, UConn service will not be implemented in 2016



Phase I Update

- Enhanced Local Service
- Five routes to have expanded service hours:
 - 82/84 – Tolland Street
 - 83 – Silver Lane
 - 88 – Burnside Avenue
 - 91 – Forbes Street Crosstown
 - 95 – Glastonbury

	Earlier Weekday	Later Weekday	Earlier Saturday	Later Saturday	Earlier Sunday	Later Sunday
Route 82/84		✓	✓	✓	✓	✓
Route 83		✓		✓		✓
Route 88		✓		✓		✓
Route 91	✓	✓	✓	✓	✓	✓
Route 95		✓		✓	✓	✓



Phase I Update

Enhanced Local Service

- Service extended until 10:45 PM on Monday – Saturday; 7:40 PM on Sunday
- Extended service will begin in summer 2016
- Annual operating subsidy for enhanced service is \$585,000
 - \$309,000 for weekday
 - \$276,000 for weekend



Phase II Timeline

CTfastrak East:

- Planning to be completed by December 2016
- Additional buses arriving late 2017
- Additional service in 2017 subject to funding
- CTfastrak facilities and infrastructure - longer-term



Market Analysis Review

CTfastrak service should:

- Serve corridors with high ridership potential
- Connect origins and destinations of regional significance
- Provide fast and direct service for longer-distance trips



Best Markets for CTfastrak East

- Primary Markets
 - MCC/Silver Lane (Existing)
 - Buckland Hills Mall area
 - Buckland Hills park & ride to Hartford
 - UConn Storrs
- Secondary and/or Future Markets
 - Union Station
 - Vernon and Tolland park & rides
 - Burnside Avenue
 - Goodwin College
 - UTC/Pratt & Whitney
 - Rentschler Field developments
 - Downtown Manchester
 - Main Street, East Hartford
 - ECSU
 - Willimantic



Phase II CTfastrak Service Options

- UConn – Hartford Service
- CTfastrak Silver Lane
- CTfastrak Burnside Avenue



UConn-Hartford Service

- Full UConn service
 - Expanded service on *CTtransit* Route 917
 - Direct hourly service - Storrs to Hartford
 - Service until midnight, seven days
 - Stops at Tolland, Rockville, Vernon and Buckland park-and-rides
 - Stop at the Buckland Hills Mall
- Lower cost options examined
 - Extended hours on Route 917 with UConn-Tolland provided separately
 - Eliminate Vernon stop; Make Buckland and Rockville stops peak-only
 - Reduce frequency to every 90 minutes
 - End service at 7 PM



CTfastrak Silver Lane

- No change in frequency or service hours
- Adjust schedules on Route 121 to mesh with Route 83
- Eliminate stops with low CTfastrak ridership making them local bus only



Burnside Avenue Options

- Buckland Hills to Hartford
- Service options
 - Enhanced local bus service
 - Limited stop CTfastrak overlay
 - Semi-express CTfastrak overlay



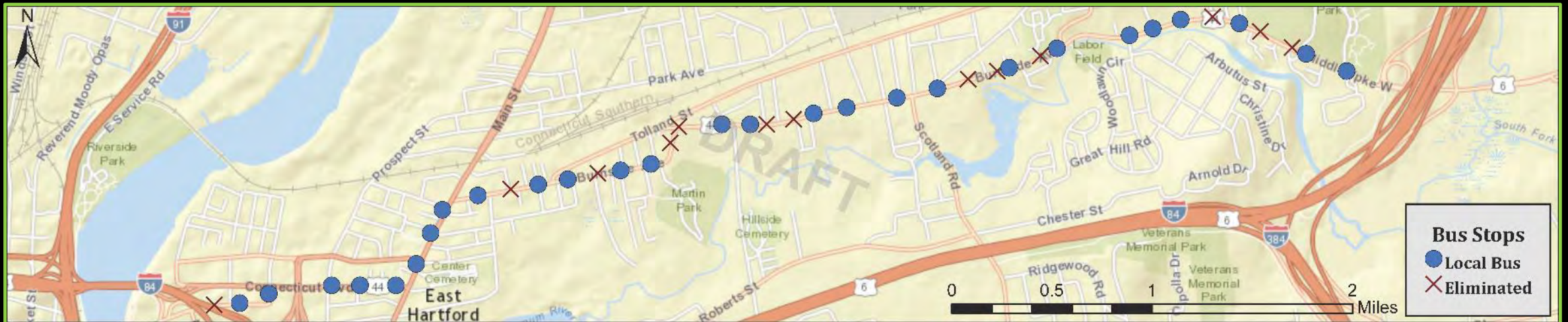
Burnside Avenue Corridor

- Connecticut River to I-84
 - 4.8 miles
 - 40 bus stops, 8 stops/mile
- Existing Route 88 to Manchester
 - Every 15 min. peak
 - Every 30 min. off-peak



Enhanced Local Bus Corridor on Burnside

- Add a second local (blue) bus route
 - Buckland Hills to downtown
 - via New State Road and Burnside
- Alternate new route with Route 88
 - Every 7.5 min. peak / 15 min. off-peak
- Bus stop options
 - Existing stops or reduce from 40 to 27
 - 5.4 stops/mile with reduced stops
 - 90% of ridership could use current stop
 - 100% of ridership within one stop



New Burnside Limited Stop CTfastrak Route

- Add new CTfastrak route
 - Buckland Hills to Flatbush
 - I-84, Burnside, downtown to CTfastrak
 - Every 20 min. peak / 30 min. off-peak
 - Limited stops, shorter travel time
- Bus stops
 - Route 88 continues to serve all 40 stops
 - CTfastrak serves 13 stops
 - 2.5 stops/mile, comparable to Silver Lane
 - 63% could use current stop for CTfastrak
 - 98% within one stop of CTfastrak



New Burnside Semi-Express CTfastrak Route

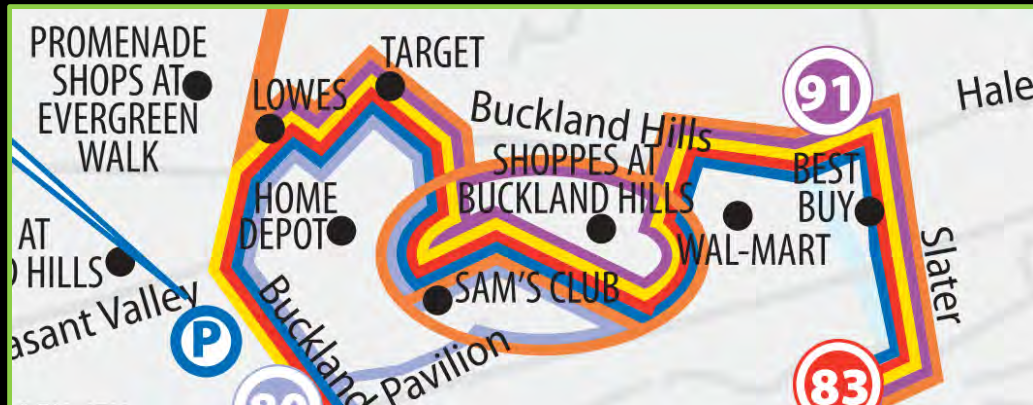
- Add new CTfastrak route
 - Same as limited stop except fewer stops
- Bus stops
 - CTfastrak serves 7 stops
 - 1.3 stops/mile, comparable to CTfastrak roadway
 - 51% could use current stop for CTfastrak
 - 80% within one stop of CTfastrak



Phase II Connecting Service: Buckland Hills Area Services and Markets

- Existing local services

- CTtransit routes 82/84, 83, 91, 92
- Hourly service on each route
- One-way loop through the area
 - 82/84, 83 and 91/92 westbound
 - 92/91 eastbound (requires back-tracking)



- Currently served

- Shoppes at Buckland Hills
- Wal-Mart
- Target

- Unserved/poorly-served

- Evergreen Walk
- The Pavilions
- Hale Road

- Future UConn-Hartford service

- Only Mall and P&R stops



Buckland Hills Area: Limitations and Service Needs

- Limitations

- Poor pedestrian connections and limited amenities
- West-facing stops at Wal-Mart and mall
- Historic limitation on bus volumes through mall property
- Ability/suitability of 40' buses to negotiate developments

- Service Needs

- Coordinated connections from UConn-Hartford service to area destinations
- Improved access to Evergreen Walk
- Service to Hale Road destinations
- Improved access for eastbound buses
- Service to residential developments



Buckland Hills Area: Modifying Local Bus Routes to Meet Service Needs

- Connect to UConn-Hartford service at Mall or at P&R – westbound only
- Other scheduling needs may restrict schedule coordination opportunities
- May not be able to enter Evergreen Walk
- Serving Hale Road would add considerable time and mileage
- Existing stops not conducive to eastbound service
- ***Limited potential to improve access with changes to existing local routes***



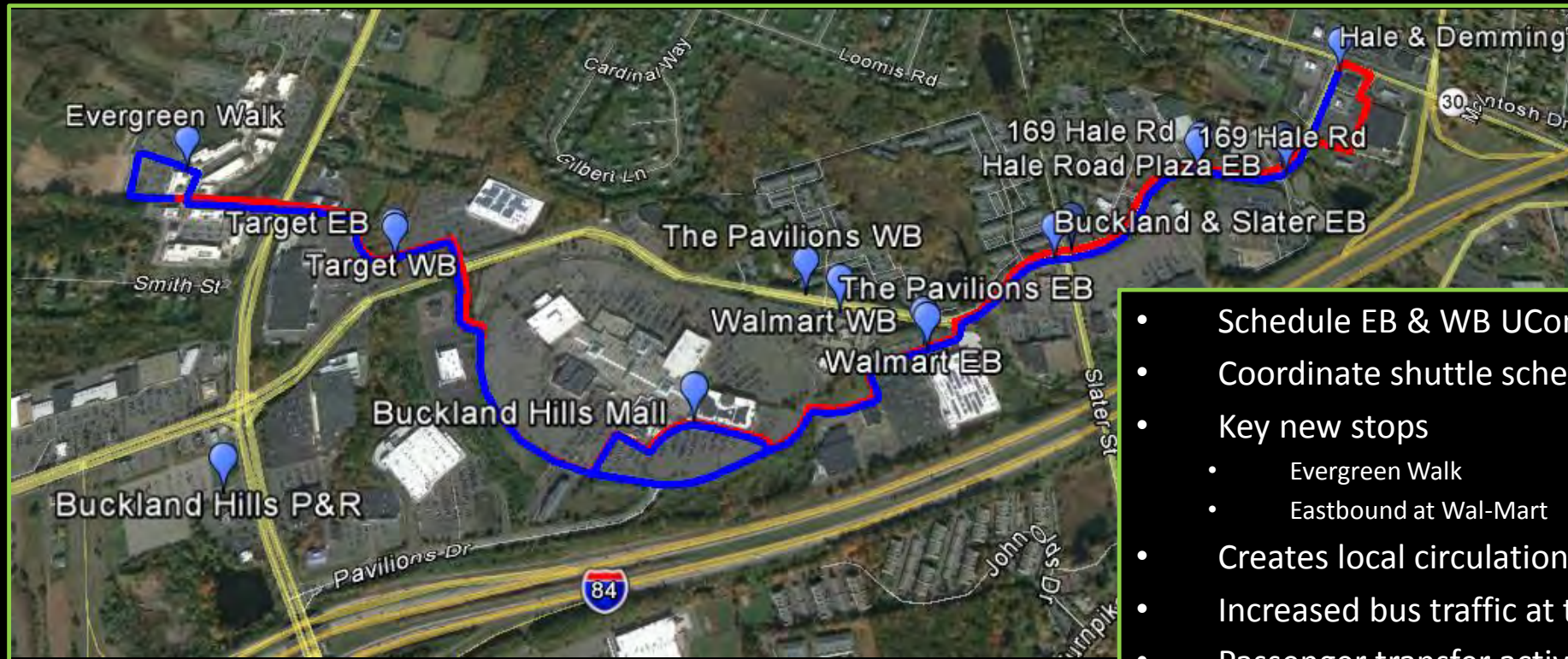
Buckland Hills Area: Proposed Connecting Shuttle Service

- Create linear shuttle connection through Buckland Hills Drive/Hale Rd corridor
 - Smaller vehicles to more easily negotiate access roads and parking areas
 - 30 minute frequency possible with 2 vehicles
- Connect to UConn-Hartford service every hour
- Serve additional locations in Buckland Hills area
- Feasible eastbound circulation pattern for smaller vehicles





Connecting Service Opportunities: Buckland Hills

Option A: Connections to UConn – Hartford at Buckland Hills Mall



Legend

Eastbound 

Westbound 

- Schedule EB & WB UConn – Hartford at same time
- Coordinate shuttle schedule with UConn – Hartford
- Key new stops
 - Evergreen Walk
 - Eastbound at Wal-Mart
- Creates local circulation route
- Increased bus traffic at the mall
- Passenger transfer activity at the mall





Connecting Service Opportunities: Buckland Hills

Option B: Connections to UConn – Hartford at Buckland P&R



Legend

Eastbound 

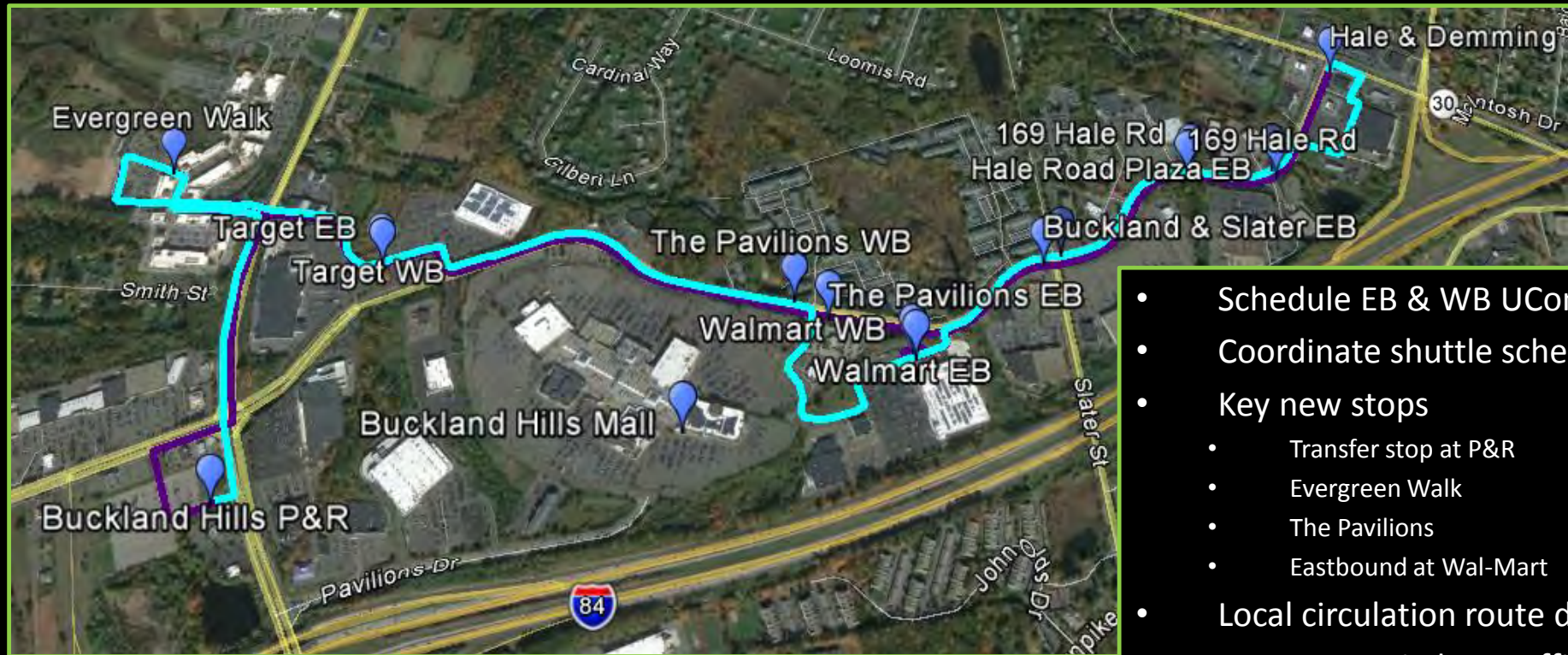
Westbound 

- Schedule EB & WB UConn - Hartford at same time
- Coordinate shuttle schedule with UConn - Hartford
- Key new stops
 - Transfer stop at P&R
 - Evergreen Walk
 - Eastbound at Wal-Mart
- Creates local circulation route
- Increased bus traffic at the mall
- Passenger transfer activity at P&R or mall



Connecting Service Opportunities: Buckland Hills

Option C: Connections to UConn - Hartford at P&R - no service to Mall



Connecting Service Opportunities: dash Shuttle

dash
● stop #

stop 11
J XL Center
S Hilton Hotel

stop 9
R 179 Allyn

stop 7 & 8
Q Union Station (RR)
(connections to 30-BDL)

stop 6
L Bushnell Park
N Soldiers & Sailors Arch
O State Capitol
P Homewood Suites

stop 5
I Welcome Center
J XL Center
(connections to CTfastrak)
K Theater Works

stop 4
I Welcome Center
L Bushnell Park
M Bushnell Park
Carousel

stops 1-14
See hartford.com
for restaurants, bars,
attractions

Free downtown shuttle
departs CT Convention
Center every 15 minutes
Monday through Friday from
7:00am to 7:00pm.
Extended hours during special large events—
check www.cttransit.com for details.

stop 12
T Hartford Stage
U Residence Inn
X Old State House

stop 13
V Radisson Hotel

stop 15
X Old State House
W The Spectra
Y Riverfront Plaza

stop 1
A CT Science Center
B Hartford Marriott
C CT Convention Center
(connections to 30-BDL)

stop 2
D Front Street Attractions

stop 3
E Ancient Burying Ground
F Wadsworth Atheneum
G Hartford Public Library
H Butler-McCook House

free shuttle route

HARTFORD HAS IT

A service of
Printed March 2016

- Clockwise, one-direction loop
- Weekday service from 7am to 7pm
- 15 minute frequency
- Later evening and weekend service during major downtown events



Markets: dash Shuttle

- Maintain core downtown connections for visitors
- Connections to/from *CTfastrak*
- Distribution for Hartford Line riders
- Access to Columbus Boulevard state offices
- Service for downtown residents



Phase II CTfastrak Bus Rapid Transit Facilities and Infrastructure



Existing CTfastrak BRT Elements

- Dedicated bus-only roadway
- Fleet of CTfastrak branded buses
- Fast, frequent and direct service
- On-board Wifi
- Level boarding platforms
- Quick boarding with pay-before-you-ride options
- Enhanced shelters
- Intersection or roadway improvements to speed service
- Transit Signal Priority Techniques



Proposed CTfastrak East BRT Elements

- ~~Dedicated bus-only roadway~~
- Fleet of CTfastrak branded buses
- Fast, frequent and direct service
- On-board Wifi
- ~~Level boarding platforms~~
- Enhanced fare pay options
- Enhanced shelters
- Intersection or roadway improvements to speed service
- Transit Signal Priority Techniques



Typical Park and Ride Amenities



Typical Park and Ride Amenities



CTfastrak Expansion Meetings

- Nov. 20 – Stakeholder Meeting #1 - *Completed*
- Dec. 15 – Stakeholder Meeting #2 - *Completed*
- January 19, 2016 – 1st Public Open Houses - *Completed*
- February – UConn Outreach - *Completed*
- Feb. 19 – Stakeholder Meeting #3 - *Completed*
- June 3 – Stakeholder Meeting #4 - *Today*
- July 2016 – Stakeholder Meeting #5
- August 2016 – 2nd Public Open House

